



CONTACT

JSPR  
T +31 (0) 40269211  
INFO@JSPR.EU  
WWW.JSPR.EU



Jacob Nitz

The Amirite collection is designed by Jacob Nitz. Amirite is a furniture series inspired by the joining of two materials, steel and Oakwood. The bodies of each furniture piece are comprised of a single piece of laser-cut-steel. The flat patterns are thoughtfully bent into shape to give structure, comfort and style. The legs are crafted out of massive Oakwood or metal and mounted flush to the steel bodies.

The Amirite collection allows for a truly customized solution to fit a variety environments, both interior and exterior. This is achieved by allowing the consumer to combine different types of legs, painted steel or natural oak, with a multitude of coloured steel bodies.

Custom colour or finishes on request.



highback bar stool  
60cm (seat height)



lowback bar stool  
60cm (seat height)



chair  
45cm (seat height)



highback bar stool  
80cm (seat height)



low back bar stool  
80cm (seat height)



bench  
120cm/160cm (length)



small stool  
45cm (seat height)



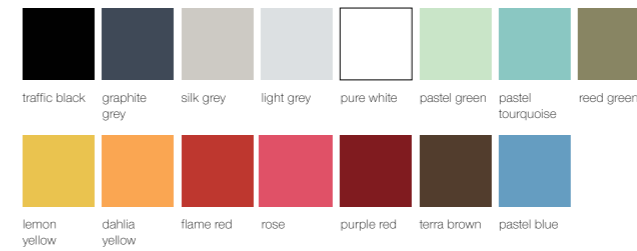
desk  
100cm x 60cm / 140cm x 70cm /  
180cm x 70cm (all 75cm high)



table  
160cm x 90cm / 180cm x 90cm /  
200cm x 100cm / 250cm x 100cm  
(all 75cm high)



table  
80cm x 80cm  
(75cm high)



custom colours on request

MATERIAL & COLOUR

ALL ITEMS HAVE A MATTE COLOUR FINISH.